

**Limora Zentrallager**

Industriepark Nord 21  
D - 53567 Buchholz  
Tel: +49 (0) 26 83 - 97 99 0  
E-Mail: [Limora@Limora.com](mailto:Limora@Limora.com)  
Internet: [www.Limora.com](http://www.Limora.com)

**Filialen:**

• Aachen • Berlin • Bielefeld  
• Düsseldorf • Hamburg  
• Köln • Stuttgart

**ANHARD ROD ASSEMBLY FOR MGB, MGBV8 & MGC FITTING INSTRUCTIONS**

**PANHARD ROD KIT CONTENTS:**

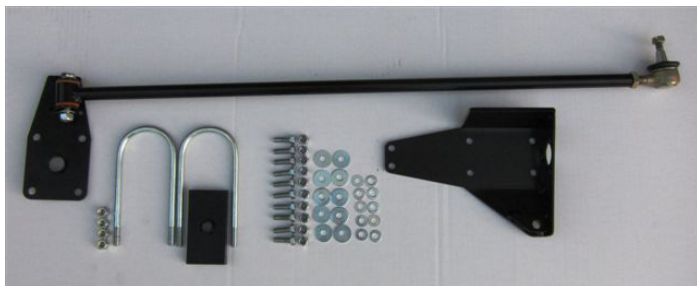
- 1x Panhard Rod, with ball joint & Poly Bush
- 1x Body Bracket
- 1x Axle Plate
- 10x M8 X 20 Bolts
- 10x M8 Washer (Small)
- 10x M8 Washers (Large)
- 10x M8 Nyloc Nuts
- 4x M8 Plain Nuts (for assembly only)
- 1x M10 x 60mm Bolt
- 2x M10 Washers
- 1x M10 Nyloc
- 2x U Bolts
- 4x 3/8" UNF Nyloc Nuts
- 2x Polyurethane Spring Pads

**TOOLS NEEDED:**

- Electric Drill
- 8mm drill bit,
- 3mm drill bit
- Panel Marker Pen or Scribing Point
- Scraper

**Spanners:**

- 13mm AF open/ring & socket,
- 17mm AF open/ring & socket
- 19mm open end
- 1/2 inch and 9/16 inch ring/ socket



**STEP 1: BODY MOUNTING BRACKET**

1. Remove and set aside the contents of your boot, including the carpet (if fitted) to reveal the steel body. (See Image below)



2. Loosen the rear road wheel nuts.
3. Jack up the car by placing a trolley jack under the diff housing. Support the car with axle stands under the front part of the rear springs, just ahead of the axle / spring mountings.
4. Body bracket location: Lhs of the car at the top and rear of the axle space: Scrape off any under seal / rust in this area. Check that the structure is in good condition. (See Image below)



5. Offer up the body mounting bracket against faces A & B and hard up against the axle strap bracket. When happy that the bracket is a close snug fit to the surfaces use the bracket as a template to mark two well spaced holes on each surface to locate the bracket. (See Image below)

**Limora Zentrallager**

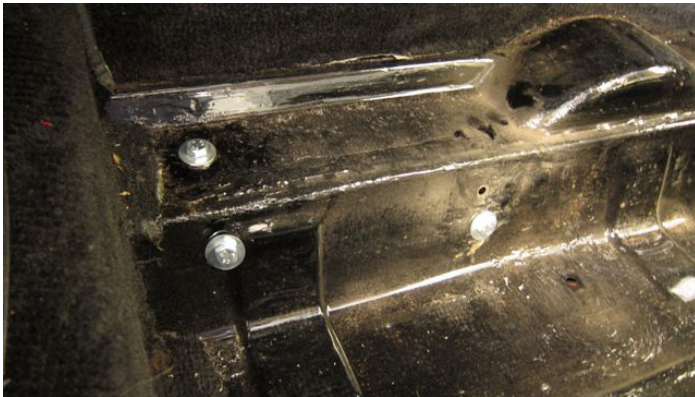
Industriepark Nord 21  
D - 53567 Buchholz  
Tel: +49 (0) 26 83 - 97 99 0  
E-Mail: [Limora@Limora.com](mailto:Limora@Limora.com)  
Internet: [www.Limora.com](http://www.Limora.com)

**Filialen:**

- Aachen • Berlin • Bielefeld
- Düsseldorf • Hamburg
- Köln • Stuttgart



6. Pilot drill the holes, re-drill to 8mm and then pass the bolts with large washers through the boot floor and secure the bracket using the plain nuts. (See Images below)



7. Ensure the bracket remains snugly fitted against the axle strap bracket and surfaces A + B before drilling the remaining holes.

8. The bolts should be fitted from within the boot, assembled with the large washer, passed through the floor and bracket before securing with the smaller washer and nyloc nut. It is preferable when mounting the boot floor bracket to have an assistant to help with the tightening of the fixings. NB Remember to replace the plain nuts with nylocs for final assembly. Tightening of the nuts will result in a dishing of the large washers. Torque to 20 ft/lbs. (See Images below)



**STEP 2: SPRING/ AXLE PLATE**

9. Location: Rhs/ offside of the axle and rear spring: Loosen and remove the nuts on the axle U bolts and remove the U bolts (both to be discarded)

10. Disassemble the existing parts, leaving the shock absorber attached to the shock absorber bracket but rotated to one side. Hint: use trolley jack carefully placed under the brake drum to lift/ take the weight of the axle.